

PROJECT OVERVIEW:

1. THE INSTALLATION IS AN ISLAND IN THE SW CORNER OF THE PLAYGROUND, CREATED FOR SHADE, & NATURE PLAY.
2. THE 'BEAN' SHAPE SPACE CONSISTS OF A MIN 6" D WOODCHIP MULCH BED ANCHORED AT EACH END WITH A DISCOVERY ELM TREE, A VARIETY KNOWN TO BE RESISTANCE TO DUTCH ELM DISEASE.
3. ACTIVITY ELEMENTS INCLUDE GROUPS OF LOG STEPPERS, & GROUPINGS OF LARGE BOULDERS.
4. LARGE SHRUBS AND SMALL MULT-STEM MAPLE TREES ADD YEAR ROUND COLOUR AND TEXTURE.

CONTRACTOR NOTES:

1. SITE ACCESS, PARKING & STAGING TO BE DETERMINED AT START UP.
2. OBTAIN CONTRACT ADMINISTRATION APPROVAL PRIOR TO MOBILIZATION.
3. ERECT 6' CHAINLINK CONSTRUCTION FENCE PRIOR TO CONSTRUCTION.
4. CONTRACTOR IS RESPONSIBLE FOR REPAIR & RETURN TO ORIGINAL CONDITION ANY DAMAGE BEYOND SITE BOUNDARY.
5. CONTROL ANY EROSION OR RUN OFF. MAINTAIN CLEAN SIDEWALKS AND ROADS DURING CONSTRUCTION.
6. CONFIRM EXISTENCE & EXACT LOCATION OF ALL NEW & EXISTING SERVICES PRIOR TO CONSTRUCTION. CONTRACTOR IS RESPONSIBLE FOR REPAIRING ALL DAMAGES CAUSED TO SERVICES & ANY CONSEQUENTIAL DAMAGES.
7. PLEASE REPORT ANY ENCUMBRANCES OR DISCREPANCIES TO CONSULTANT IMMEDIATELY.

HORIZON LINE
Landscape Planning & Design

215 oxford st, winnipeg 204 299 9596 wsimonson@shaw.ca

No.	Revision	Date
2	Reshape bed; add small trees	July 9, 2019
1	Alter bed shape, add shrubs	June 3, 2019

Project
**GROUNDS REDEVELOPMENT
 PHASE 3**

Drawing
L - 01 LAYOUT PLAN

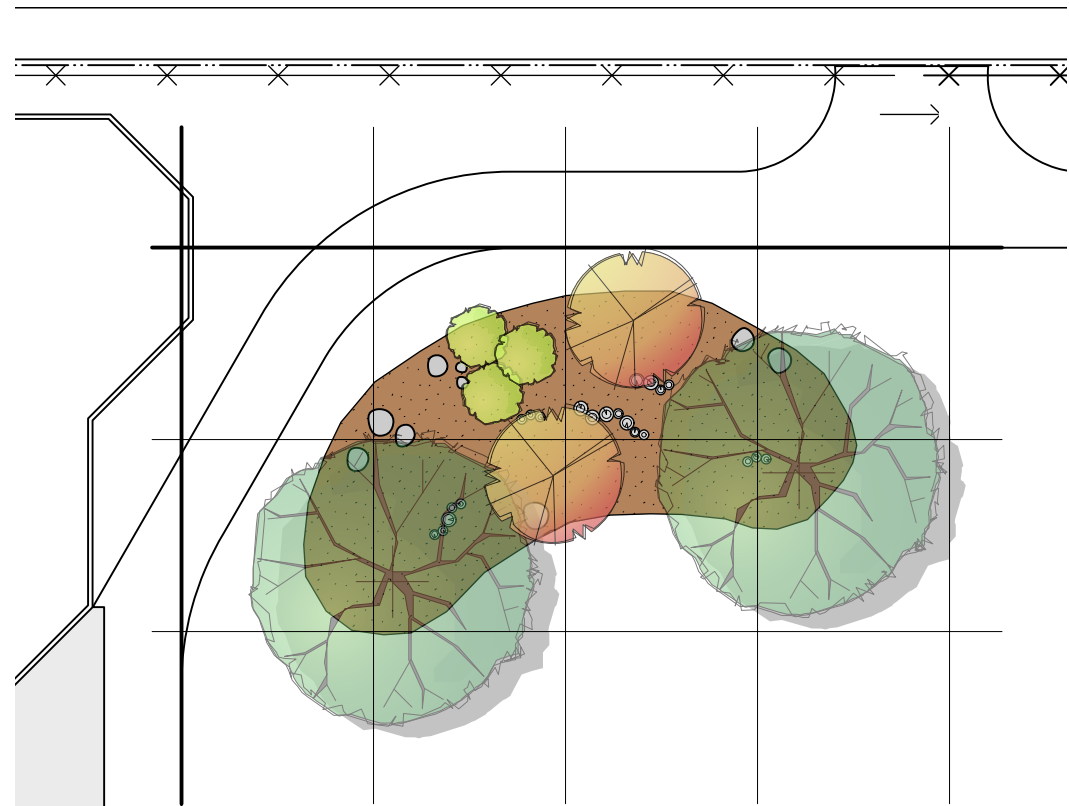
Scale
 AS NOTED



Client
ÉCOLE ROBERT H. SMITH SCHOOL
 WINNIPEG SCHOOL DIVISION

Address
 315 Oak St., WINNIPEG

Designer, Drafter
 WS
 Date
 July 9, 2019



1 PLAN: LAYOUT GRID, 20' o/c
L-02 1:360

NOTES ON INSTALLATION OF ALL ELEMENTS:

CONTRACTOR TO FOLLOW THESE DETAILS FOR EACH ELEMENT
(Pls see separate attachment)

ELEMENT	DETAIL NO.*
DECIDUOUS TREE PLANTING	1.01
PROTECTIVE TREE CAGE	1.02
MULTI-STEM SHRUB PLANTING	1.41
LOG STEPPERS	5.16

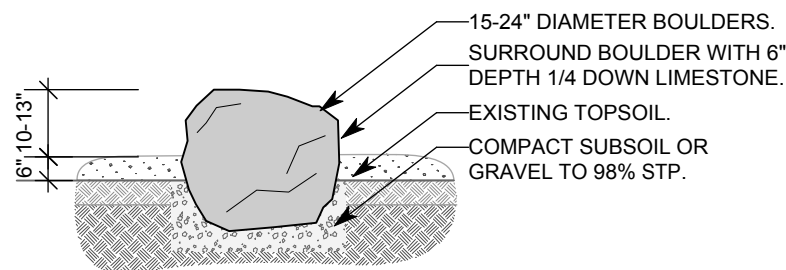
* These construction details can also be found in this document, available on line:
The "Winnipeg School Division School Ground Greening Guidelines for Play and Learning"

LEGEND

- NATURAL WOODCHIP MULCH
- FIELD BOULDERS
- LOG STEPPERS
- YELLOW TWIG DOGWOOD
- MULTI-STEM AMUR MAPLE
- DISCOVERY ELM

NOTES:

1. GRIND OR SMOOTH ANY SHARP EDGES OR CORNERS PRIOR TO INSTALLATION.
2. INSTALL FLATTEST SIDE UP.
3. ENSURE BOULDER IS STABLE. TRENCH BASE OF BOULDER MIN 2" INTO EXISTING TOPSOIL.
4. BURY BOTTOM 1/4 OF SMALLER BOULDERS, OR ENOUGH TO ENSURE BOULDER WILL NOT BE DISPLACED.



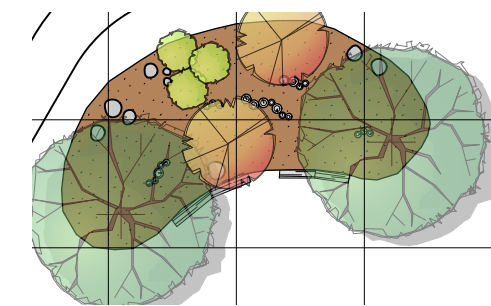
2 BOULDER INSTALLATION
L-02 Scale: 1/4" = 1'-0"

QTY	BOTANICAL/COMMON NAME	SIZE/REMARKS
2	<i>Ulmus davidiana</i> 'Discovery' Discovery Elm	3.5" cal., 12 major branches in well-formed head, B & B or tree mover, wire basket.
2	<i>Acer ginnala</i> Amur maple - Multi-Stem	20-24" Ht., min 3 major basal branches, well shaped bushy plant. Container stock.
3	<i>Cornus alba</i> 'Bud's Yellow' Bud's Yellow Dogwood	18-20" Ht., min 4 major basal branches, well formed bushy plants. Container stock.

3 PLANT SCHEDULE
L-02 N.T.S.

PLANTING NOTES:

1. CONFIRM LOCATION OF ALL PLANT MATERIAL W/ CONSULTANT PRIOR TO INSTALLATION.
2. USE 1/3 PARENT MATERIAL MIXED WITH GOOD QUALITY PLANTING MIX.
3. INSTALL ALL PLANT MATERIAL AS PER SPECIFICATIONS & DETAILS. NO SUBSTITUTIONS WITHOUT PRIOR APPROVAL OF CONSULTANT.
4. ENSURE ALL NEW & EXISTING SERVICES HAVE BEEN MARKED PRIOR TO DIGGING. CONTRACTOR IS RESPONSIBLE FOR REPAIRING ALL DAMAGES CAUSED TO SERVICES & ANY CONSEQUENTIAL DAMAGES DURING CONSTRUCTION.
5. ALL DAMAGE TO SITE & ADJACENT PROPERTIES TO BE REPAIRED PRIOR TO PROJECT COMPLETION.
6. PLEASE REPORT ANY DISCREPANCIES TO CONSULTANT IMMEDIATELY.



4 HORIZONTAL LOG EDGING OPTION
L-02 1:360

HORIZON LINE
Landscape Planning & Design

215 oxford st, winnipeg 204 299 9596 wsimonson@shaw.ca

Revisions

No.	Revision	Date
2	Reshape bed; add small trees	July 9, 2019
1	Alter bed shape, add shrubs	June 3, 2019

Project
GROUNDS REDEVELOPMENT
PHASE 3

Drawing
L - 02 DETAILS

Scale
AS NOTED



Client
ÉCOLE ROBERT H. SMITH SCHOOL
WINNIPEG SCHOOL DIVISION

Address
315 Oak St., WINNIPEG

Designer, Drafter
WS
Date
July 9, 2019