

SCHOOL NAME & PROJECT

Robert H Smith School

315 OAK STREET
WINNIPEG

REDEVELOPMENT PHASE 2

NOTES

THE PROJECT INSTALLATION WILL BE DIVIDED INTO TWO PARTS:

1 THE PLAY EQUIPMENT, BENCHES AND PICNIC TABLE TO BE SUPPLIED/INSTALLED BY MANUFACTURER.

2 SIX SHADE TREES, 4 BOULDERS & A WOODCHIP POD, TO BE TENDERED.

THIS DOCUMENT IS FOR DISCUSSION PURPOSED ONLY. DO NOT CONSTRUCT FROM THIS DRAWING.

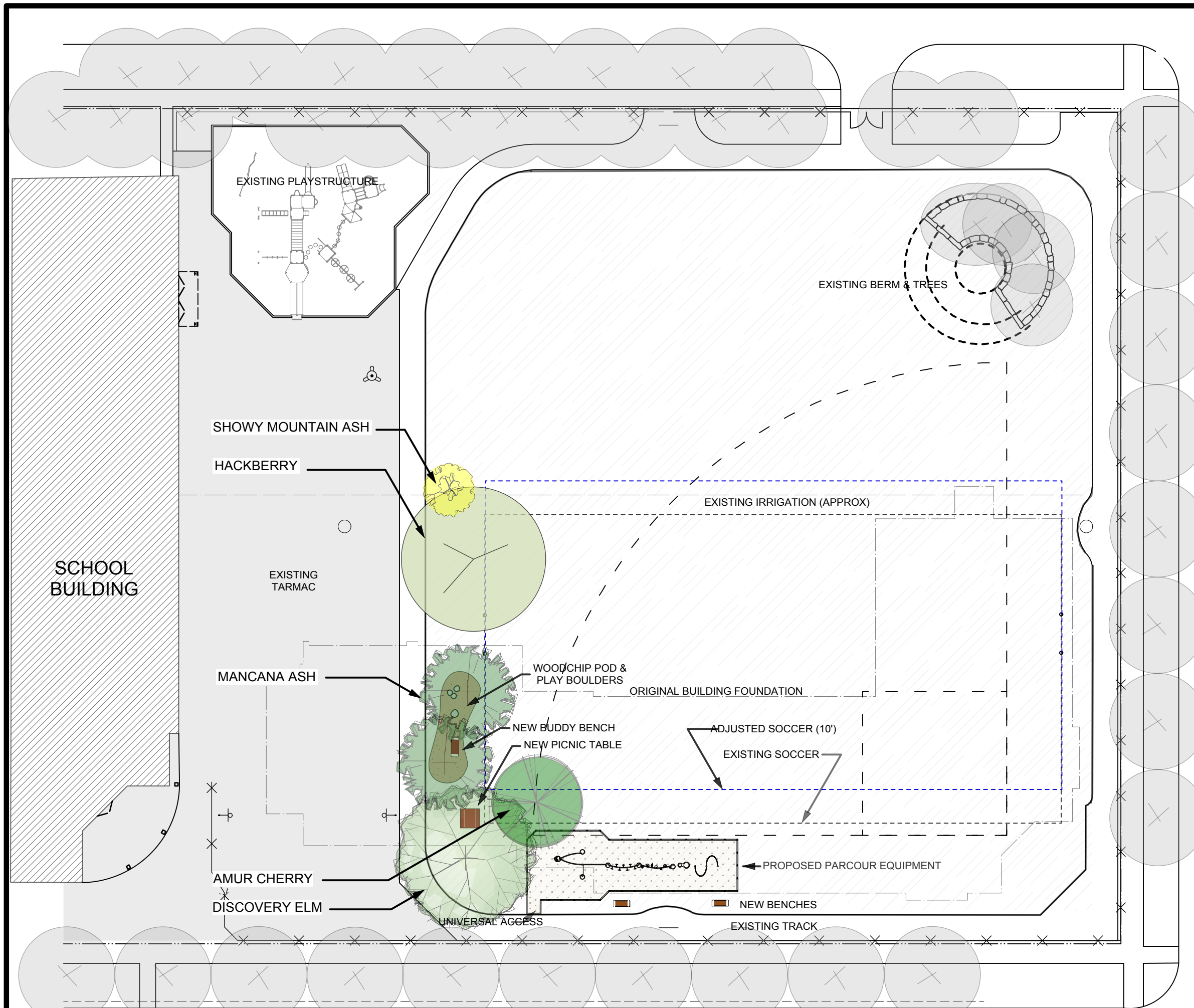
HORIZON LINE
Landscape Planning & Design

215 oxford st. winnipeg 204 299 9596 wsimonson@shaw.ca

REVISIONS

DATE AUGUST 1, 2016

SCALE 1" = 30' @ 11 X 17



KINGSWAY AVE